



Morgans

PROPERTY

112 Beechbank Crescent, Kelty, KY4 0LT

Offers Over £115,000







Well presented mid terraced villa with easy to maintain gardens to the front and rear providing excellent outdoor space. The property is a credit to the owners and briefly comprise entrance hallway, lounge/diner, fitted kitchen with door to gardens and on the upper level there are two double bedrooms and modern shower room. The property is double glazed with gas central heating. Essential viewing.





LOCATION

Kelty is well placed for commuting, as it is adjacent to the M90 motorway with easy access to Edinburgh, Perth, Kinross and Dunfermline. In recent years Kelty has developed into a pleasant residential community. The subjects are well placed for easy access to local shops, primary schools, bank, churches, bowling club and other central amenities. There is a regular bus service to the main neighbouring towns of Cowdenbeath, Dunfermline and Kinross. Lochore Meadows Country Park, Loch Leven Heritage Trail, Loch Fitty are also in easy reach offering various leisure and recreational facilities.

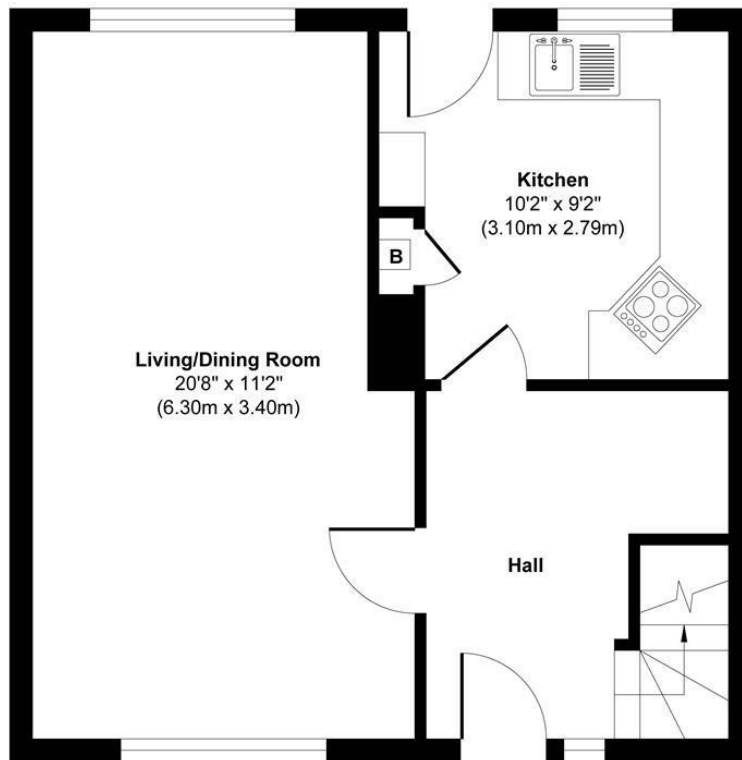
EXTRAS INC IN SALE / AGENTS NOTE

All floor coverings, blinds, bathroom and light fittings together with integrated appliances,

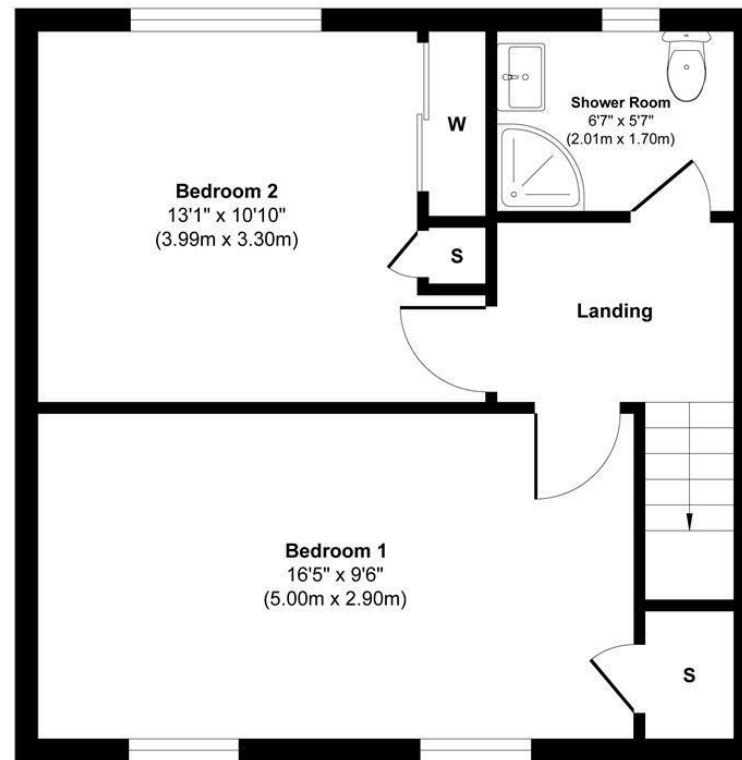
From 1st February 2022, residential properties in Scotland are required by law to have installed a system of inter-linked smoke alarms, carbon monoxide detectors and heat detectors (the "inter-linked system"). No warranty is given to the interlinked system installed in this property.







Ground Floor



First Floor



This floor plan is for illustrative and marketing purposes only and is to be used as a guide only. No details are guaranteed on measurements, floor areas, or orientation and do not form any agreement. No liability is taken for error, omission or misstatement. A party must rely upon its own inspection(s). Created by 9AM Media



SOLICITORS | PROPERTY

33 East Port, Dunfermline, Fife, KY12 7JE

Tel: 01383 620222 Fax: 01383 621213

www.morganlaw.co.uk



espc

s1homes.com

rightmove

Zopla.co.uk

onTheMarket.com



AGENTS NOTE These particulars do not form part of any contract and the statements or plans contained herein are not warranted nor to scale. Approximate measurements have been taken by electronic device at the widest point. Services and appliances have not been tested for efficiency or safety and no warranty is given as to their compliance with any Regulations. No movable items will be included in the sale.